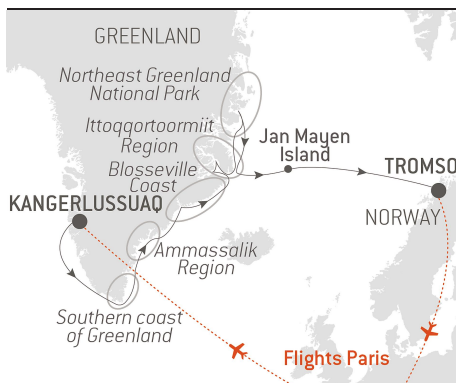


# Expedition along the East Coast of Greenland - with National Geographic

From **15/08/2021**  
to **30/08/2021**

Ship: **L'Austral**

From **Kangerlussuaq**  
to **Tromsø**



Flight Paris/Kangerlussuaq + transfers + flight  
Tromsø/Paris

In partnership with National Geographic Expeditions.

**PONANT** invites you to discover the **east coast of Greenland** during a **new 16-day expedition cruise** on board *L'Austral*, and venture into an extremely remote part of the world, source of fascination to generations of explorers.

From **Kangerlussuaq**, your ship will set sail south, before reaching the east coast of Greenland, known for its wild natural environments, its alpine landscapes, and its sea ice carried along the Transpolar Drift.

You will then sail along the **Blosseville Coast**, named after the French captain who saw it for the first time in 1833. Here, the ice sheet meets the sea.

You will discover the **Scoresby Sund**, the **world's largest fjord network** and the **Ittoqqortoormiit Region**, home to a small **community of Greenlanders**: this will be the occasion to find out about the life of the last hunters in the polar regions.

Your ship will also head for **the Northeast Greenland National Park**, **the largest national park in the world and a UNESCO Biosphere Reserve**: here, there is no trace of human life, just alpine magically coloured landscapes as far as the eye can see and powerful glaciers.

*L'Austral* will then cross the Arctic Circle before making its way to **Jan Mayen Island**, which was very dear to Captain Jean-Baptiste Charcot. Located at the limit of the Arctic and North-Atlantic oceans, this remote and uninhabited volcanic island was once a major whaling base and is home to large **colonies of birds**.

*We are privileged guests in these extreme lands where we are at the mercy of weather and ice conditions. The itinerary, landings on certain sites and the observation of certain wildlife cannot be guaranteed. They vary from day to day, making each PONANT cruise a unique experience. The Captain and the Expedition Leader will make every effort to ensure that your experience is as rich as possible, while complying with the safety rules and instructions imposed by the AECO.*



The information in this document is valid as of 11/08/2020

# Expedition along the East Coast of Greenland - with National Geographic

## YOUR STOPOVERS :

### KANGERLUSSUAQ

Embarkation 15/08/2021 from 16h00 to 17h00

Departure 15/08/2021 at 18h00

From 1941 to 1992, the town of **Kangerlussuaq** in Greenland was home to an American military base. Nowadays, thanks to its international airport, it has become a transit point for travellers seeking adventure in the Far North. Located to the north of the Arctic Circle, this town is the starting point of magnificent discoveries surrounded by **unspoiled nature**. Indeed, just a few dozen kilometres from there it is possible to get close to the Greenland ice sheet, the largest **body of ice in the Northern Hemisphere**. From Kangerlussuaq, admire also the superb landscapes of tundra in autumnal colours, where Arctic hares, musk oxen, Arctic foxes, reindeer, falcons and eagles live.

### AT SEA

Arrival 16/08/2021

Departure 16/08/2021

During your day at sea, make the most of the many services and activities on board. Treat yourself to a moment of relaxation in the spa or stay in shape in the fitness centre. Depending on the season, let yourself be tempted by the swimming pool or a spot of sunbathing. This day without a port of call will also be an opportunity to enjoy the conferences or shows proposed on board, to do some shopping in the boutique or to meet the PONANT photographers in their dedicated space. As for lovers of the open sea, they will be able to visit the ship's upper deck to admire the spectacle of the waves and perhaps be lucky enough to observe marine species. A truly enchanted interlude, combining comfort, rest and entertainment.

### SOUTHERN COAST OF GREENLAND

Arrival 17/08/2021

Departure 17/08/2021

Set sail in the traces of the Norwegian explorer Erik Le Rouge by travelling along the **south coast of Greenland**. Your ship will head deep into the longest network of fjords in the region, the **Prinz Christian Sund**. This sumptuous natural canal, surrounded by **craggy mountains** and impressive **glaciers** will offer you stunning landscapes.

### AMMASSALIK REGION

Arrival 18/08/2021  
Departure 19/08/2021

Still almost unknown just a century ago, the east coast of Greenland remains the most authentic and majestic region. Here, the **alpine mountains** merge intimately with the sea, while the **fjords** are adorned with high snow-capped peaks and drifting icebergs. Follow in the wake of Captain **Jean-Baptiste Charcot**'s famous ship, the *Pourquoi Pas?*, which set off with its crew to discover **Ammassalik**, a small island of primitive and wild beauty where the Inuit people chose to live. The name of this island is a reference to the capelin, a small flamboyant silver coloured fish, whose presence in the thousands announces to inhabitants the return of spring. A surprising discovery in a spectacular setting.

## BLOSSEVILLE COAST

Arrival 20/08/2021  
Departure 21/08/2021

Aboard your ship, follow in the footsteps of Jules Poret de Blosseville, a French explorer and sailor. In 1833, aboard *La Lilloise*, he set off to discover this **isolated and unexplored part of eastern Greenland** and gave French names to various sites on the coast. The adventure probably has an unfortunate outcome, since the crew was never found. This uninhabited territory, which now bears his name, lies to the south of Scoresby Sund. Surrounded by ice, icebergs and pieces of pack ice, **Blosseville Coast** is one of these wild and hard-to-reach places that very few people are lucky enough to explore.

## ITTOQQORTOORMIIT REGION

Arrival 22/08/2021  
Departure 23/08/2021

Located between the largest national park and the longest system of fjords in the world, the town of Ittoqqortoormiit, whose name means "great house" in Greenlandic, is **one of the remotest inhabited places in the world**. Covered with ice and snow for nine months of the year, you will be able to discover the ancestral way of life of the **last hunters of the polar region**. As soon as the thickness of the ice floe allows, they set out on the trail of walruses, seals, narwhals, musk ox and polar bears, travelling by traditional dog sleds.

## NORTHEAST GREENLAND NATIONAL PARK

Arrival 24/08/2021  
Departure 24/08/2021

With a craggy coastline formed by **gigantic fjords**, magnificent **alpine mountains** looming over them, the shores of north-east Greenland offer breathtaking landscapes and are home to the largest national park in the world. Covering an area of around one million square kilometres, almost half the island, the North-East Greenland National Park, a **UNESCO Biosphere Reserve**, is a particularly isolated region. Cut off for many months of the year by the ice floe, it is renowned for its pristine nature and **rich wildlife**.

## ITTOQQORTOORMIIT REGION

Arrival 25/08/2021

Departure 26/08/2021

Located between the largest national park and the longest system of fjords in the world, the town of Ittoqqortoormiit, whose name means “great house” in Greenlandic, is **one of the remotest inhabited places in the world**. Covered with ice and snow for nine months of the year, you will be able to discover the ancestral way of life of the **last hunters of the polar region**. As soon as the thickness of the ice floe allows, they set out on the trail of walruses, seals, narwhals, musk ox and polar bears, travelling by traditional dog sleds.

## AT SEA

Arrival 27/08/2021

Departure 27/08/2021

During your day at sea, make the most of the many services and activities on board. Treat yourself to a moment of relaxation in the spa or stay in shape in the fitness centre. Depending on the season, let yourself be tempted by the swimming pool or a spot of sunbathing. This day without a port of call will also be an opportunity to enjoy the conferences or shows proposed on board, to do some shopping in the boutique or to meet the PONANT photographers in their dedicated space. As for lovers of the open sea, they will be able to visit the ship's upper deck to admire the spectacle of the waves and perhaps be lucky enough to observe marine species. A truly enchanted interlude, combining comfort, rest and entertainment.

## JAN MAYEN ISLAND, SVALBARD

Arrival 28/08/2021

Departure 28/08/2021

The **island of Jan Mayen**, belonging to Norway, lies hidden off Greenland's coastlines, lost between the Arctic Ocean and the North Atlantic Ocean. This small piece of land is inhabited by only a handful of Norwegian meteorologists. **Tongues of ice** descend from its volcanic summit, which culminates at 2,227 metres and is covered with a thick glacial coat. These tongues join the sea, between ranges of black **volcanic rocks** at times tinged with red. If the sky is clement, you will have the chance to glimpse the summit, decked out in magnificent light. The visit of a small fin whale will perhaps enable you to complete this memorable picture.

## AT SEA

Arrival 29/08/2021

Departure 29/08/2021

During your day at sea, make the most of the many services and activities on board. Treat yourself to a moment of relaxation in the spa or stay in shape in the fitness centre. Depending on the season, let yourself be tempted by the swimming pool or a spot of sunbathing. This day without a port of call will also be an opportunity to enjoy the

conferences or shows proposed on board, to do some shopping in the boutique or to meet the PONANT photographers in their dedicated space. As for lovers of the open sea, they will be able to visit the ship's upper deck to admire the spectacle of the waves and perhaps be lucky enough to observe marine species. A truly enchanted interlude, combining comfort, rest and entertainment.

## TROMSO

Arrival 30/08/2021 early morning

Disembarkation 30/08/2021 at 07h00

In the north of the Arctic circle you'll discover **Tromsø**, a secluded town located in the county of Troms. Norwegians call it the "Paris of the north". You'll soon see why when you discover its extensive neoclassical architectural heritage. A stunning example is the **Arctic cathedral**, a major monument whose stylistic purity echoes the outline of the mountains surrounding the town.